

MS Chambers for Recording and Imaging

A practical and convenient solution for mounting tissue preparations or cell cultures during electrophysiology or imaging experiments.

MS Chambers secure tissue or cell preparations on coverslips. Dual compressible o'rings secure coverslips without adhesives. Chambers that accommodate several sizes of coverslips are available with options suitable for most applications.



All MS Chambers include:

- * compatibility with **ALA's MS-Stage** plate or 35mm specimen holders
- * perfect mating with **ALA's HCMIS** for heat/cool applications
- * double o'ring seal / grooved undercut bottom to secure coverglass

Available options include:

- * built-in perfusion ports
- * low walls for electrode access
- * thermal foil for temperature control
- * oval interior for efficient solution exchange (laminar flow)

MS-502 Chambers:

- * for use with 24/25mm #1 or #2 round cover glass
- * large round chamber inner diameter 0.75"/19mm



MS-502D



MS-502SP



MS-502SWPW



MS-502SWP



MS-502DW



S - stainless steel bottom



D - Delrin bottom

MS-508 Chambers:

- * for use with 18mm round #1 or #2 cover glass
- * small round chamber inner diameter 0.5"/12.7mm



MS-508D



MS-508SP



MS-508SWPW



MS-508SWP



MS-508DW



S - stainless steel bottom



D - Delrin bottom

MS Chambers for Recording and Imaging

MS-512 Chambers:

- * for use with 12mm round #1 or #2 cover glass.
- * tiny round chamber inner diameter 0.325"/8.26mm



MS-512D



MS-512SP



MS-512SWPW



MS-512SWP



MS-512DW



D - Delrin bottom



S - stainless steel bottom

MS-518 Chambers:

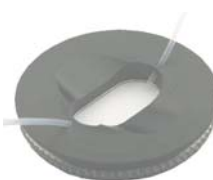
- * for use with 24/25mm round #1 or #2 cover glass.
- * oval interior 0.75"/19mm x 0.375"/9.5mm
- * excellent for laminar solution flow



MS-518D



MS-518SP



MS-518SWPW



MS-518SWP



MS-518DW



D - Delrin bottom



S - stainless steel bottom

Part numbers and ordering information

MS-5 □ □ □ □ □ □ □

Chamber style

02 = chamber that uses 24/25mm round cover glass with a 0.75"/19mm round internal opening

08 = chamber that uses 18mm round cover glass with a 0.5"/12.7mm round internal opening

12 = chamber that uses 12mm round cover glass with a 0.325"/8.26mm round internal opening

18 = chamber that uses 24/25mm round cover glass with a 0.75"/19mm x 0.375"/9.5mm oval internal opening

Chamber bottom style

S = stainless steel bottom, excellent when used for temperature control

D = black Delrin bottom, excellent when used for imaging only

Perfusion ports

P = perfusion ports 180° apart with 1/16" barbed fittings

X = not used, no perfusion ports

Chamber walls

W = remove chamber walls for excellent electrode access

X = not used, chamber walls not removed

Thermal foil option

T = adds thermal foil to chamber bottom. With T option the chamber bottom is always stainless steel with 0.5"/12.7mm opening

X = not used, no thermal foil

Perfusion port walls

W = remove perfusion ports base and fittings

X = not used, perfusion ports with walls